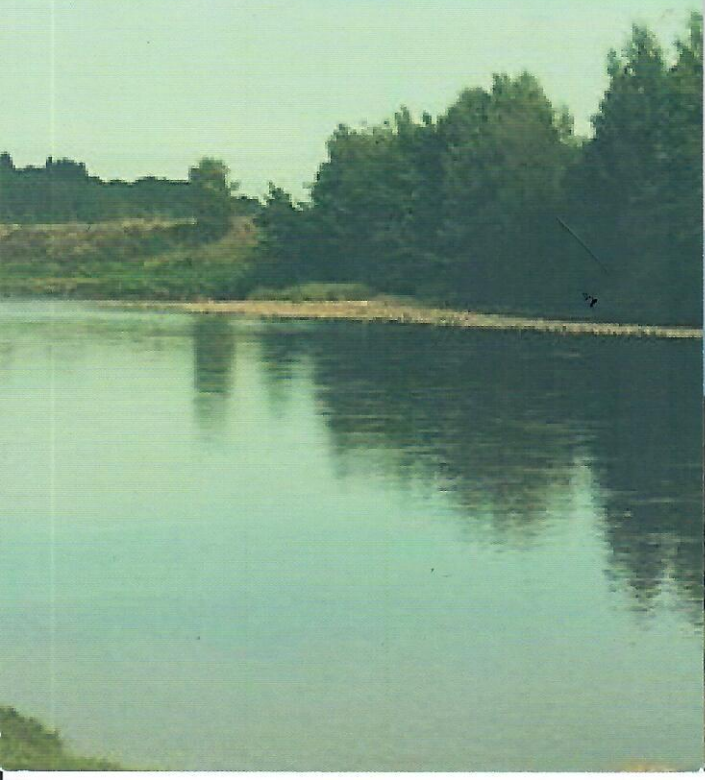


# ROYAL DEESIDE GOLF TICKET OFFER

THE ONLY WAY TO ENJOY  
GOLF ON ROYAL DEESIDE



## THE GOLFING OFFER

---

Royal Deeside offers a range of fabulous golf courses set in outstanding scenery from the banks of the beautiful river Dee to the backdrop of the Grampian Mountains and stunning valley landscapes.

There are five visitor friendly 18-hole golf courses starting at Peterculter GC on the outskirts of Aberdeen City and following the A93 to join up with Banchory GC, Aboyne GC, Ballater GC and Braemar GC (the highest course in Scotland).

## SUMMER GOLF 1ST APRIL TO 31ST OCTOBER

---

3 day visitor ticket for £90

5 day visitor ticket at £150

## WINTER GOLF 1ST NOVEMBER TO 31ST MARCH

---

3 day visitor ticket for £60

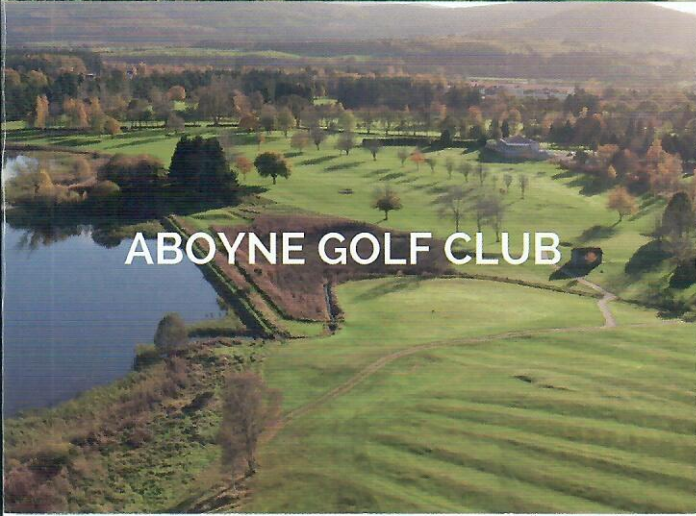
5 day visitor ticket for £100



**PETERCULTER GOLF CLUB**



**BANCHORY GOLF CLUB**



**ABOYNE GOLF CLUB**

Golfers can choose the courses which they want to play e.g. 5 day ticket, play each of the 5 courses or if they really enjoy one course, play it twice and drop one out; the choice is yours. As each course is unique, we encourage you to play them all and explore what Royal Deeside offers on and off our golfing trail.

## **HOW TO ACCESS THE DEESIDE TICKET**

---

Simply download the Deeside ticket voucher of your choice from any of our participating golf clubs, hotels or guest houses. Take the ticket to your club of choice and pay the fee e.g. summer fee £30. The club pro/golf club staff will mark on the voucher which course has been played. Repeat the process until you have used up all of your golf.

Details of each course are provided in this pamphlet.

## **NON GOLFING ATTRACTIONS**

---

Royal Deeside offers the visitor a unique set of experiences whether you are a golfer or a non-golfer. There are a wide range of activities and places to see, from castles for those of you with a historic bent, to castle gardens, fishing beats for the experienced fisher to complete beginner, wonderful garden centres, incredible countryside walks with stunning lochs and beautiful hills. Check out the golf club websites for details of local attractions and accommodation options.



## BALLATER GOLF CLUB

### FOOD AND DRINK

You can enjoy a traditional meal within our welcoming clubhouses or explore the range of fine restaurants within a short distance of the club or dine at the local hotels and guest houses.

Each of our golf clubs has listed the attractions local to them on their website to make your choice of non-golfing activities easy to make.



## BRAEMAR GOLF CLUB

## **PARTICIPATING GOLF CLUBS**

---

### **PETERCULTER GOLF CLUB**

Burnside Rd, Peterculter AB14 0LN

[www.petercultergolfclub.co.uk](http://www.petercultergolfclub.co.uk)

Tel: 01224 735245

---

### **BANCHORY GOLF CLUB**

Kinneskie Rd, Banchory AB31 5TA

[www.banchorygolfclub.co.uk](http://www.banchorygolfclub.co.uk)

Tel : 01330 822365

---

### **ABOYNE GOLF CLUB**

Formaston Park, Aboyne AB34 5HP

[www.aboynegolfclub.co.uk](http://www.aboynegolfclub.co.uk)

Tel: 01339 886328

---

### **BALLATER GOLF CLUB**

Victoria Rd, Ballater AB35 5LX

[www.ballatergolfclub.co.uk](http://www.ballatergolfclub.co.uk)

Tel: 01339 755567

---

### **BRAEMAR GOLF CLUB**

Cluniebank Rd, Braemar, Ballater

AB35 5XX

[www.braemargolfclub.co.uk](http://www.braemargolfclub.co.uk)

Tel: 01339 741618